



# Take Root Home Visitation

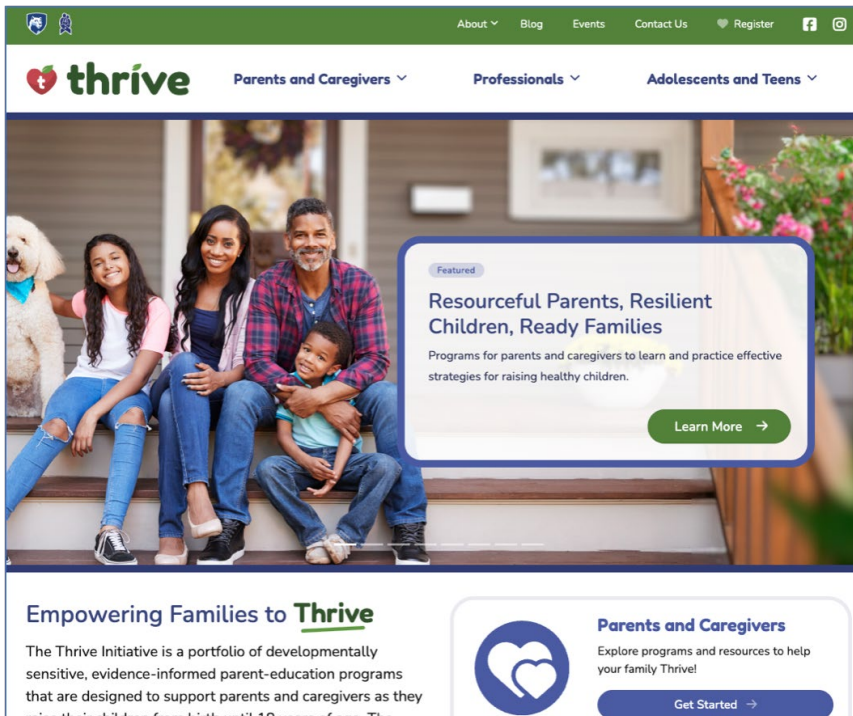
## Virtual Training Guide for Home Visitation Professionals

Take Root Home Visitation is an evidence-informed, secondary prevention program that targets military and civilian families who are or may be at risk for maltreatment. The program is delivered in a face-to-face format by home visitation specialists to parents and caregivers of infants and children who are birth to 3 years old.

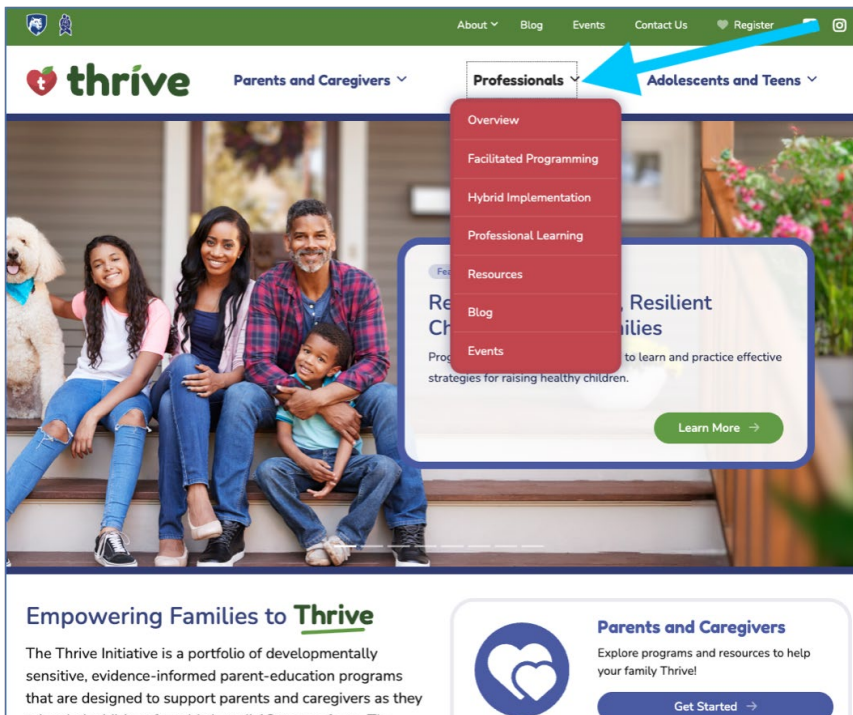
This Guide provides information on how to access the virtual training that teaches home visitation professionals how to facilitate and implement the Take Root Home Visitation curriculum with families. Currently, only New Parent Support Program (NPSP) home visitors and NPSP support personnel serving military-connected families at a military installation can participate in the web-based Take Root Home Visitation curriculum training.

## Access the Take Root Home Visitation Training

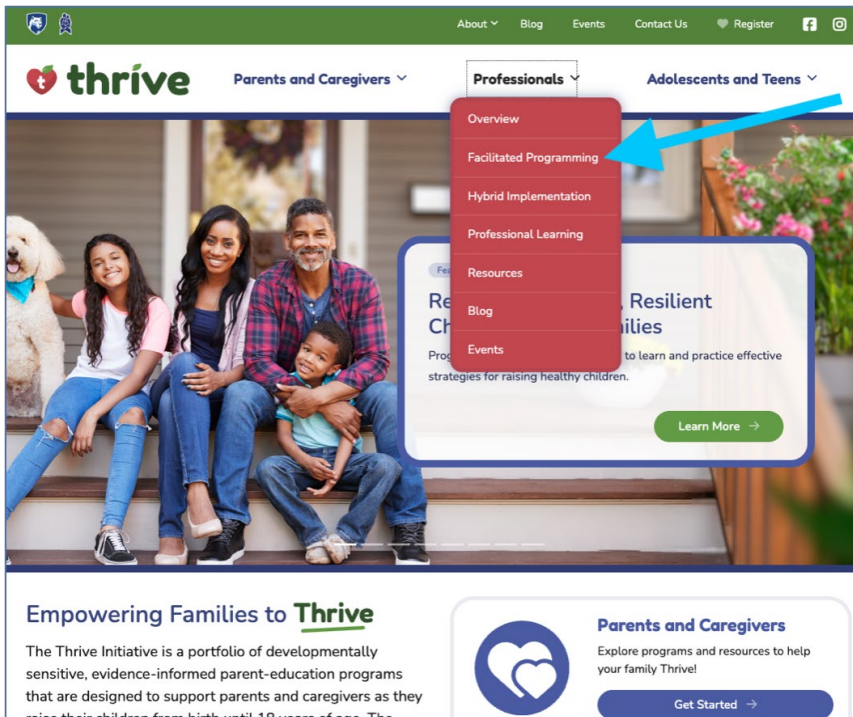
1. Visit the Thrive website at [thrive.psu.edu](http://thrive.psu.edu).



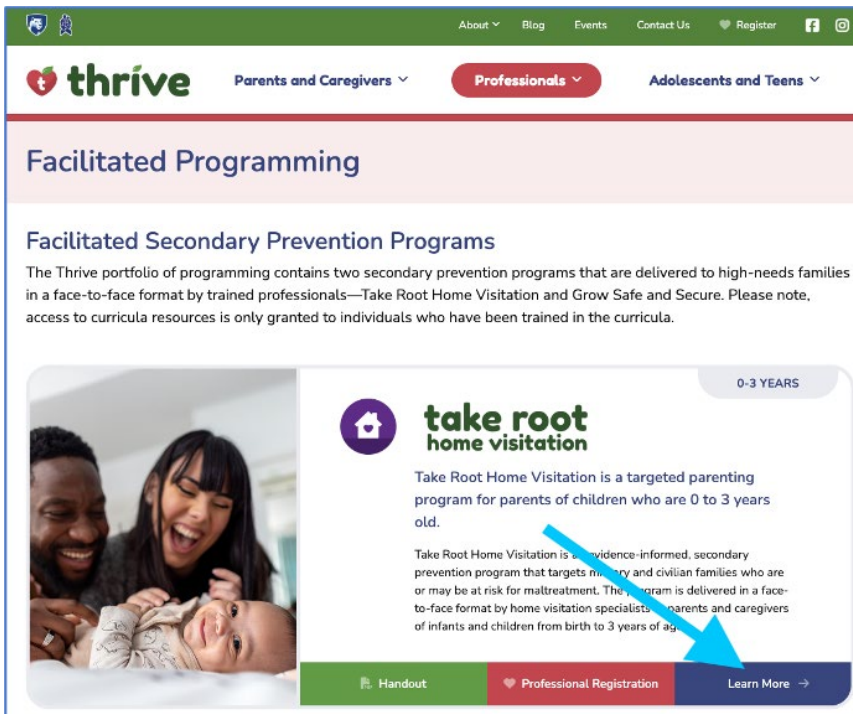
2. Click “Professionals” in the white strip near the top of the page to populate the drop-down menu.



3. Scroll to and click “Facilitated Programming.”



4. Look at the first box of content for “Take Root Home Visitation”, and click the blue button for “Learn More.”



5. Scroll to the red box, and click on “Access the Facilitator Training.”

The screenshot shows the website for Take Root Home Visitation. At the top, there is a navigation bar with links for About, Blog, Events, Contact Us, Register, and social media icons. Below the navigation bar, there are three main categories: Parents and Caregivers, Professionals (highlighted in a red box), and Adolescents and Teens. The main content area features a large image of a family (a woman, a man, and a young child) and the Take Root Home Visitation logo. A video player is embedded in the center, showing a video titled "Secondary Prevention Program for Parents of Children Ages 0-3 Years". Below the video player, there is a button labeled "Program Overview Handout". At the bottom of the page, there are two red boxes with white text and buttons. The first box asks "Would you like to be trained in Take Root Home Visitation?" and has a button labeled "Access the Facilitator Training". The second box asks "Have you been trained in Take Root Home Visitation?" and has a button labeled "Access the Online Repository". A blue arrow points from the text in step 5 to the "Access the Facilitator Training" button.

6. You will be directed to the facilitator training.

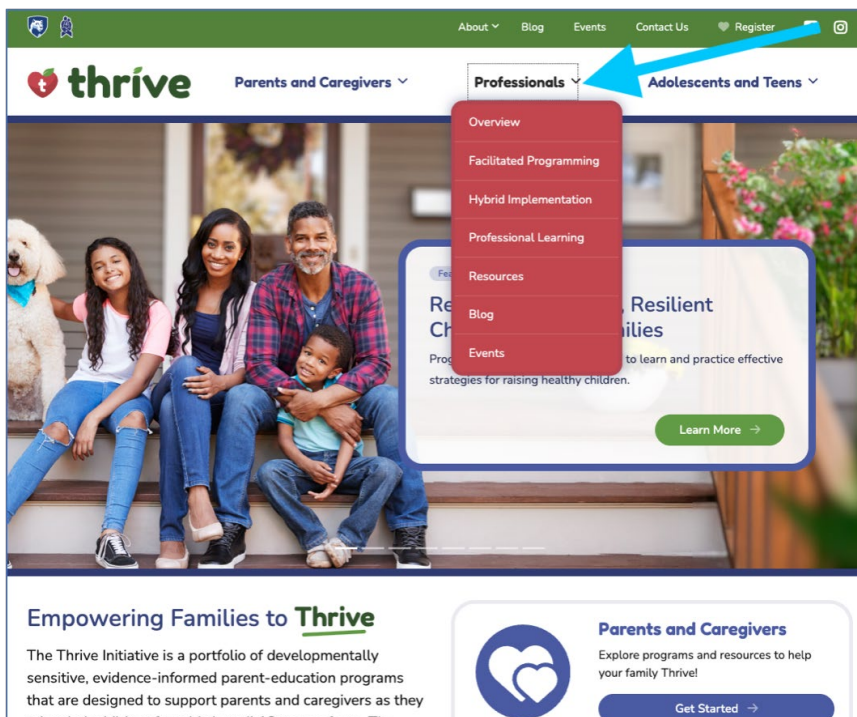
- Complete the training, as instructed.
- Once completed, you will receive a certificate of completion. Download the completion certificate and save a copy.
- Email your completion certificate to [trhv@psu.edu](mailto:trhv@psu.edu).

## Access the Take Root Home Visitation Online Repository and Online Resources

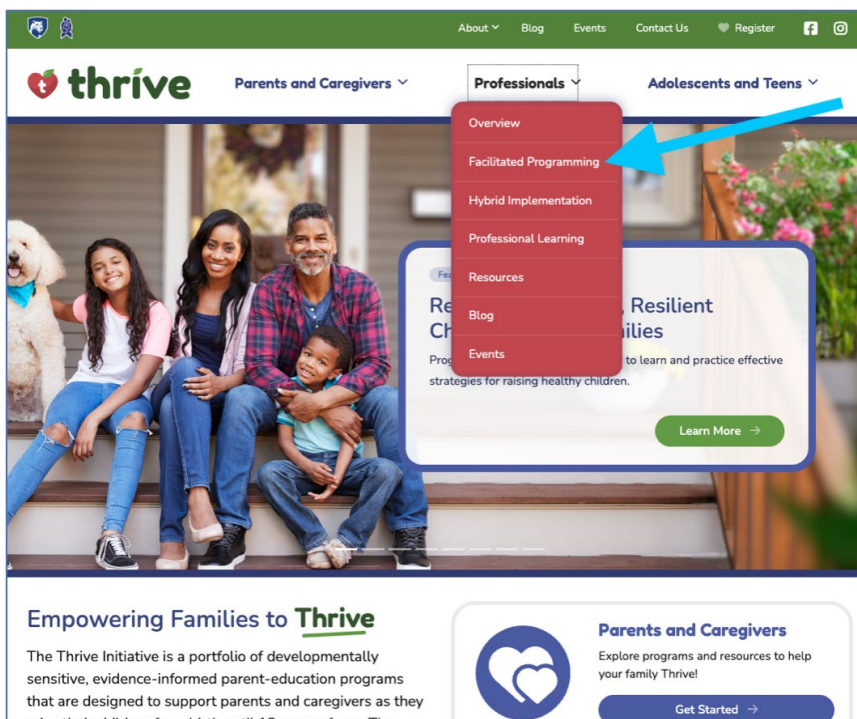
- Return to the home page of the Thrive website.



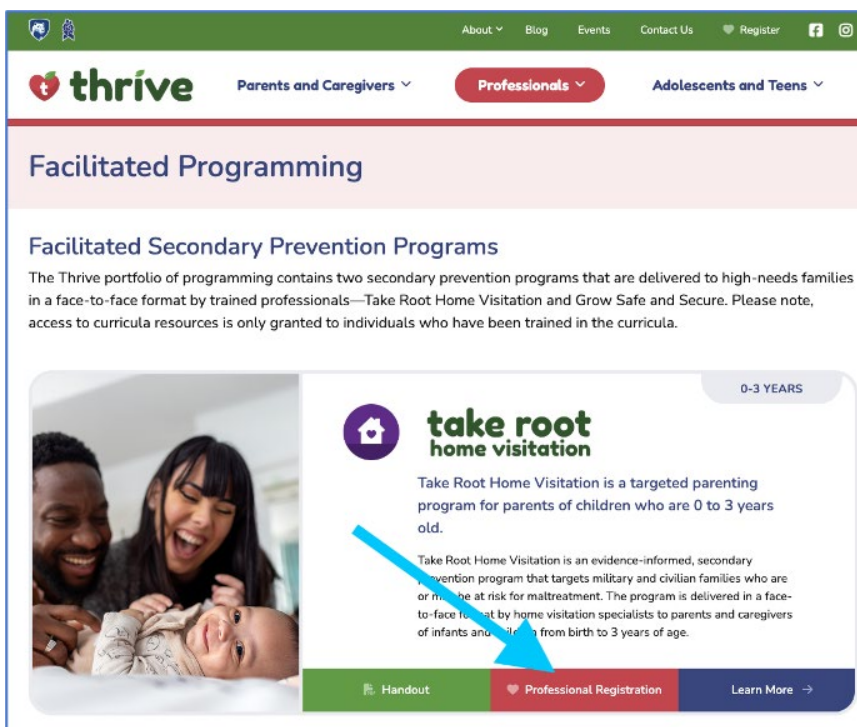
- Click "Professionals" in the white strip near the top of the page to populate the drop-down menu.



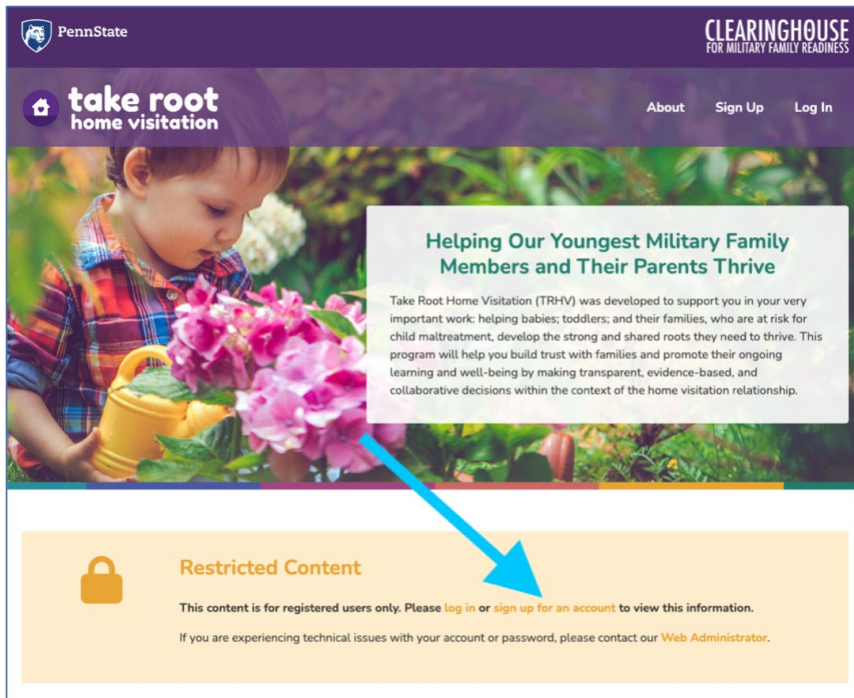
9. Scroll to and click “Facilitated Programming.”



10. Look at the first box of content for “Take Root Home Visitation”, and click the red button for “Professional Registration.”



11. Scroll to the yellow box, and click “sign up for an account.”



12. Complete the sign-up process. Please allow 48 hours for approval and activation of your account. You will be notified when your account has been activated and you have access to all Take Root Home Visitation materials. *Note, you must complete the instructions outlined in Step 6, above, before your account is eligible for activation.*

If you have any questions or need assistance, please email [trhv@psu.edu](mailto:trhv@psu.edu).